

COVID-19 Update Week of 1/31 - 2/4/2022



<https://www.apphealthcare.com>

Please visit AppHealthCare for more information on Covid-19, case trends in Ashe County, and where to get a vaccine.

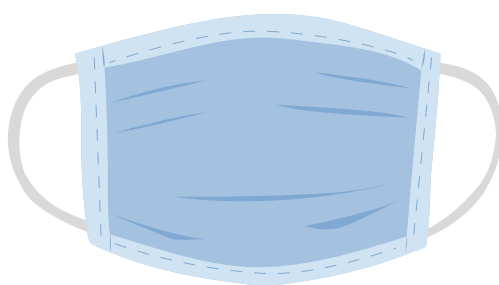


Student Positive Cases

67

Staff Positive Cases

18



Wear a mask and help stop the spread.

Learn more at
<https://www.asheschools.org>